

T-Beam Supreme Case Assembly Guide

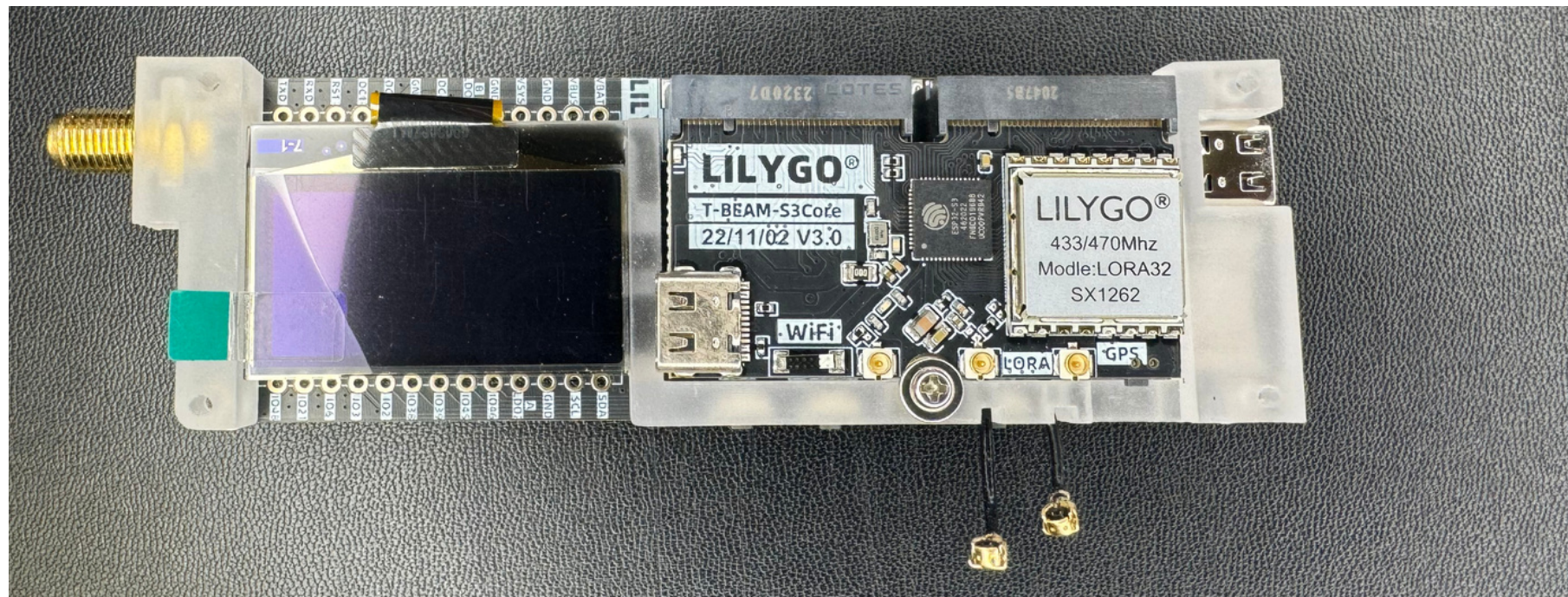
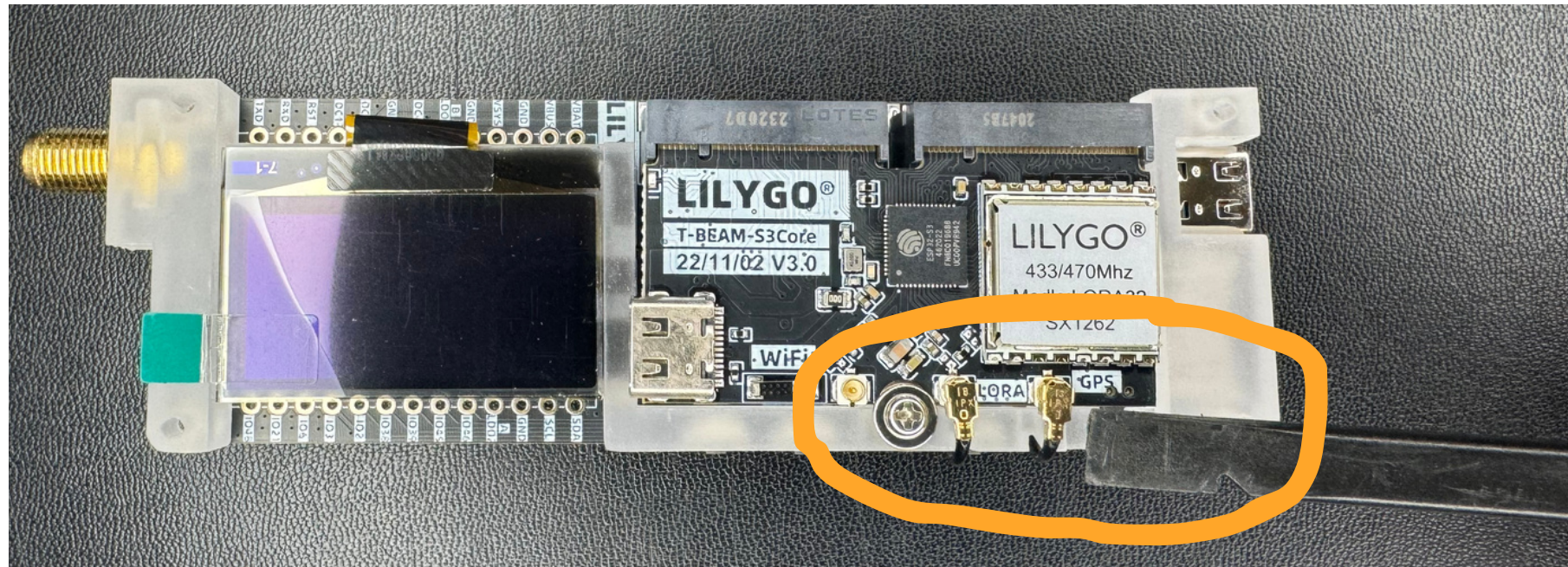


Requires:

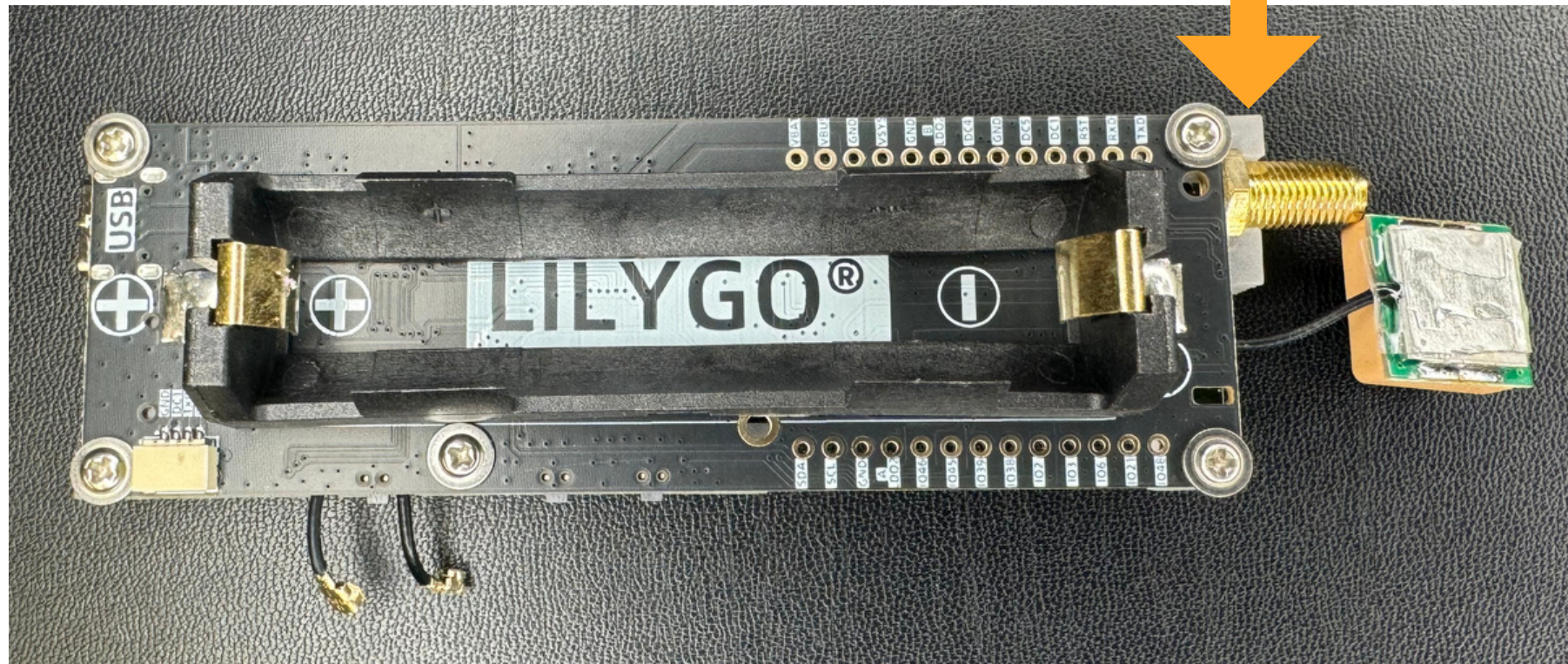
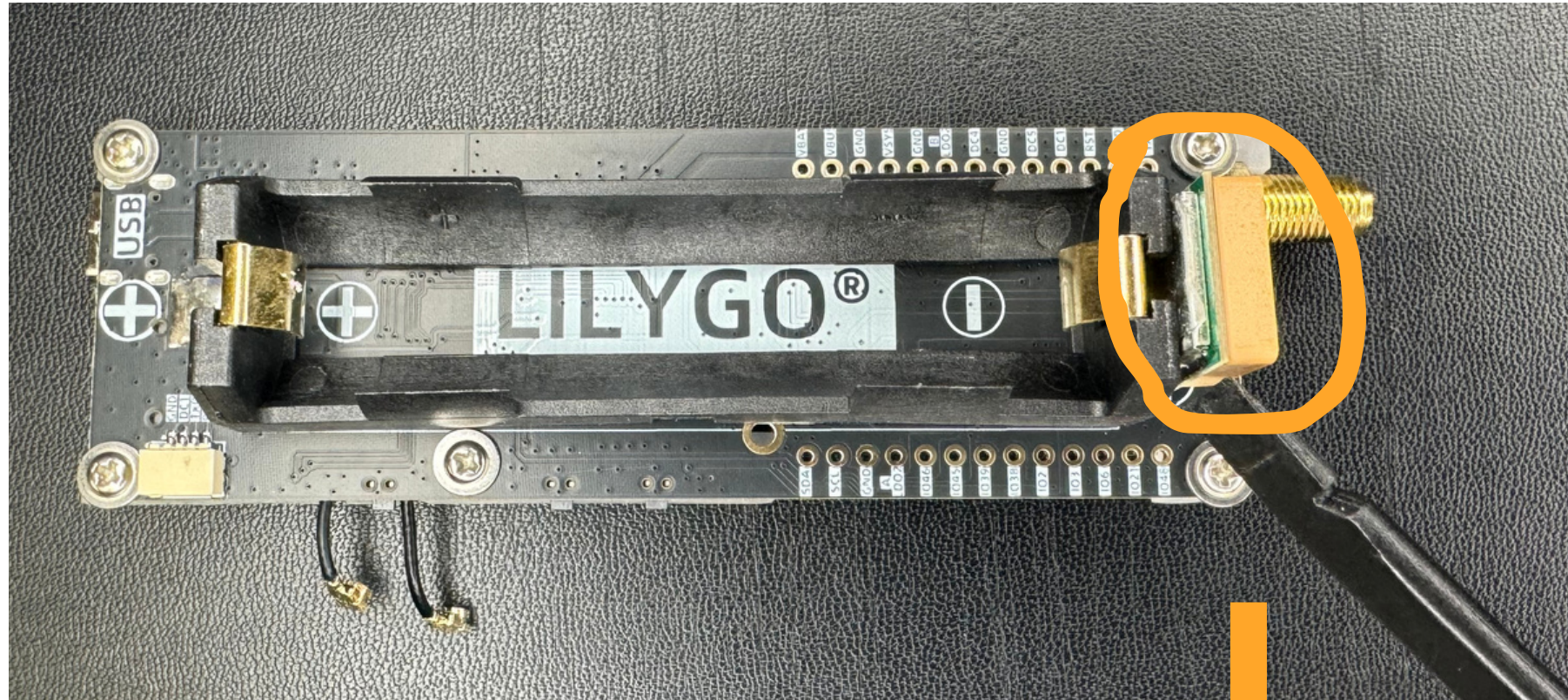
- Phillips Screwdriver (J0)
- Hex Screwdriver (#3)



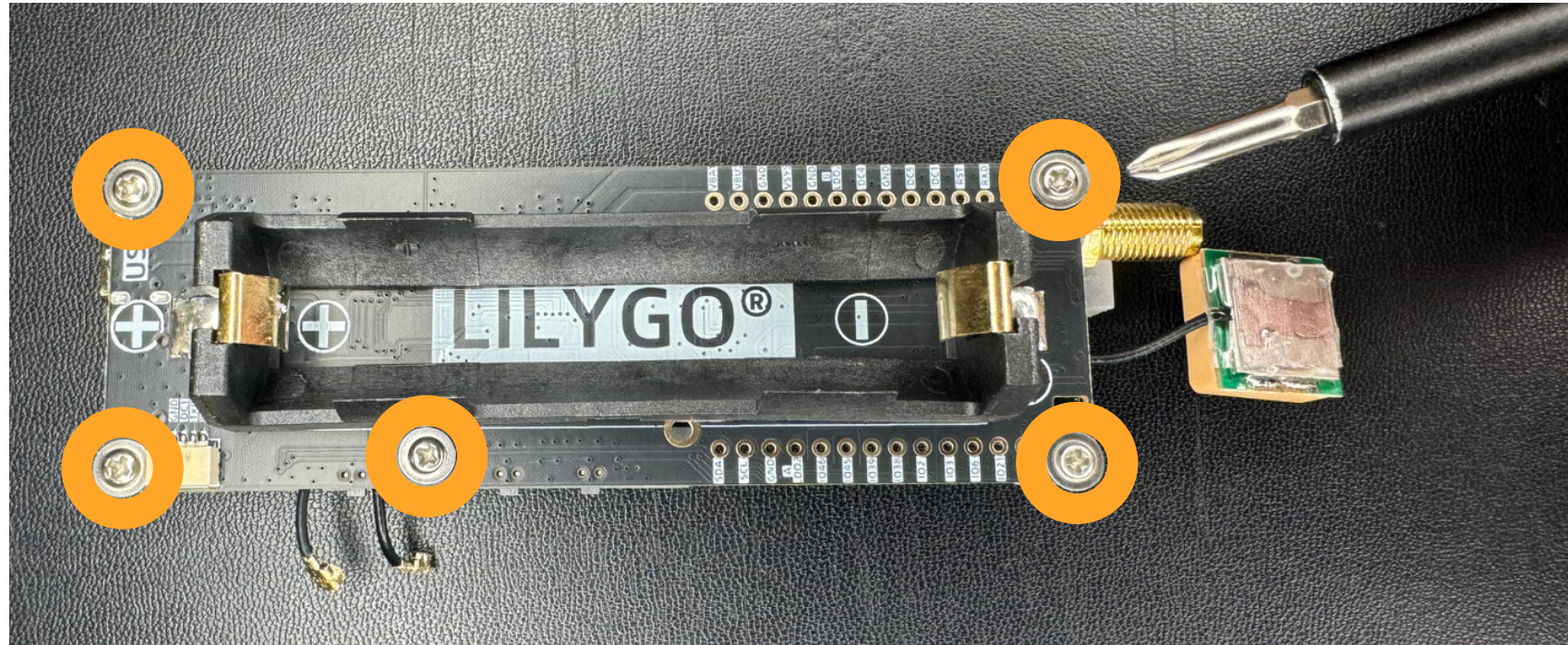
/^ESH/^ST/C



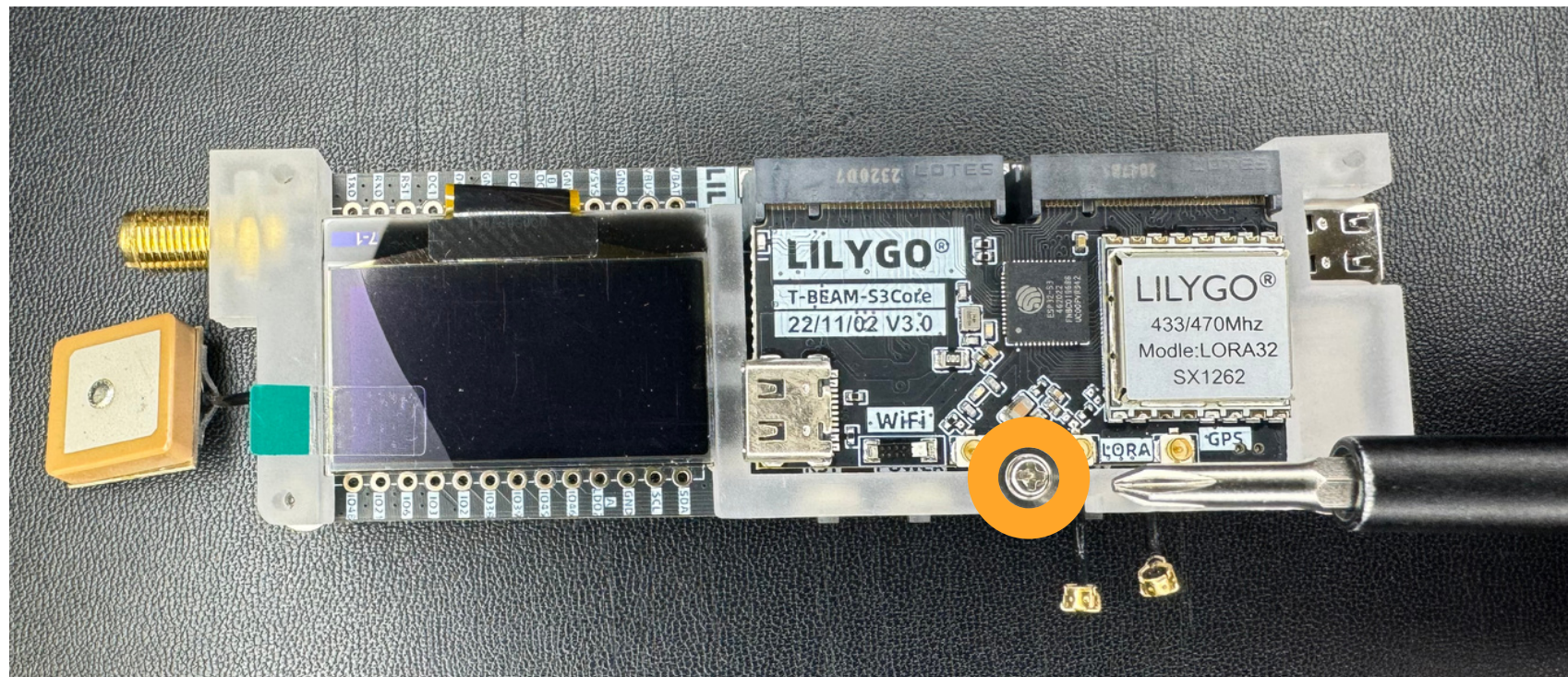
Step 1: Disconnect
LoRa & GPS IPEX
connectors

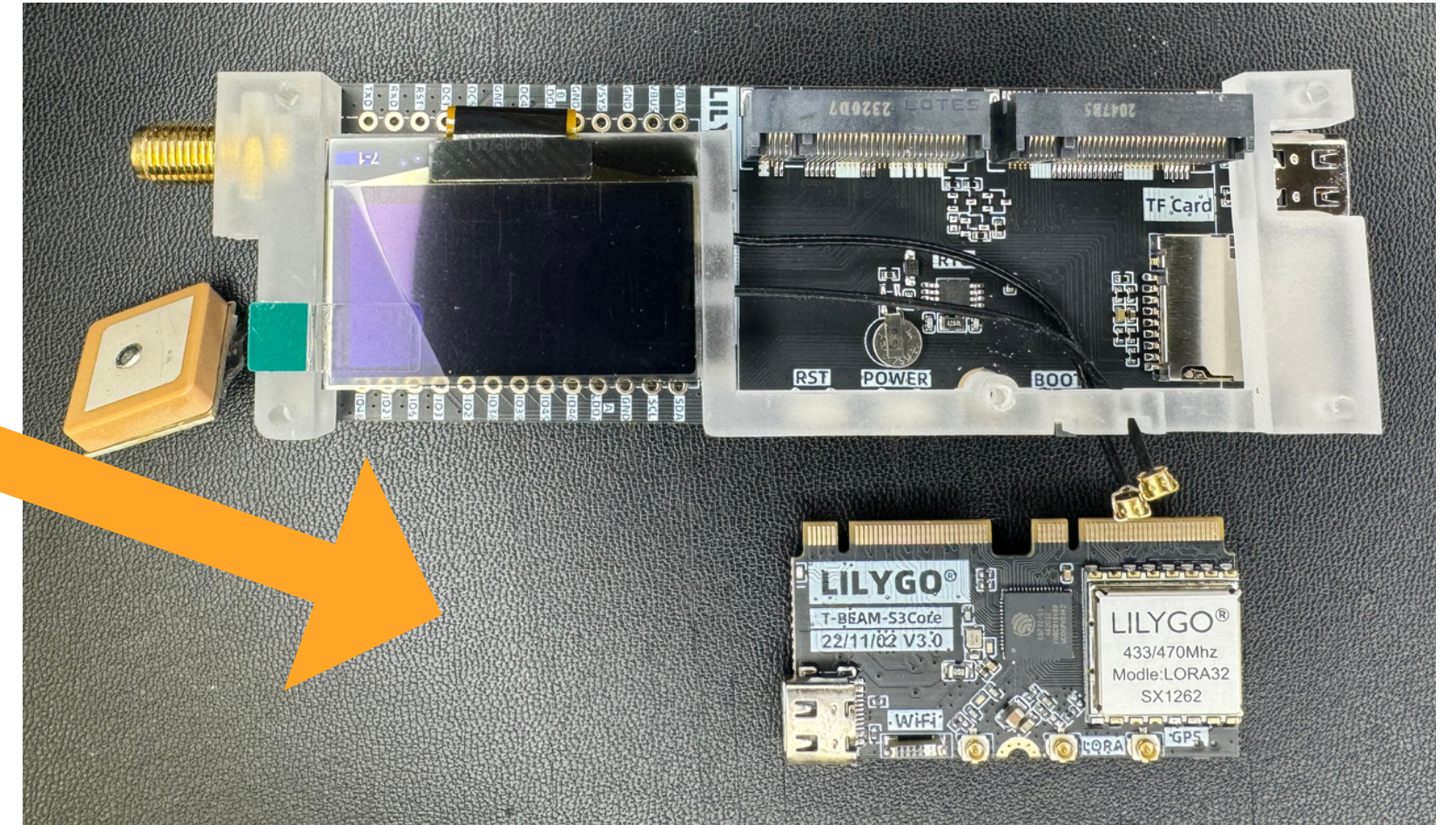
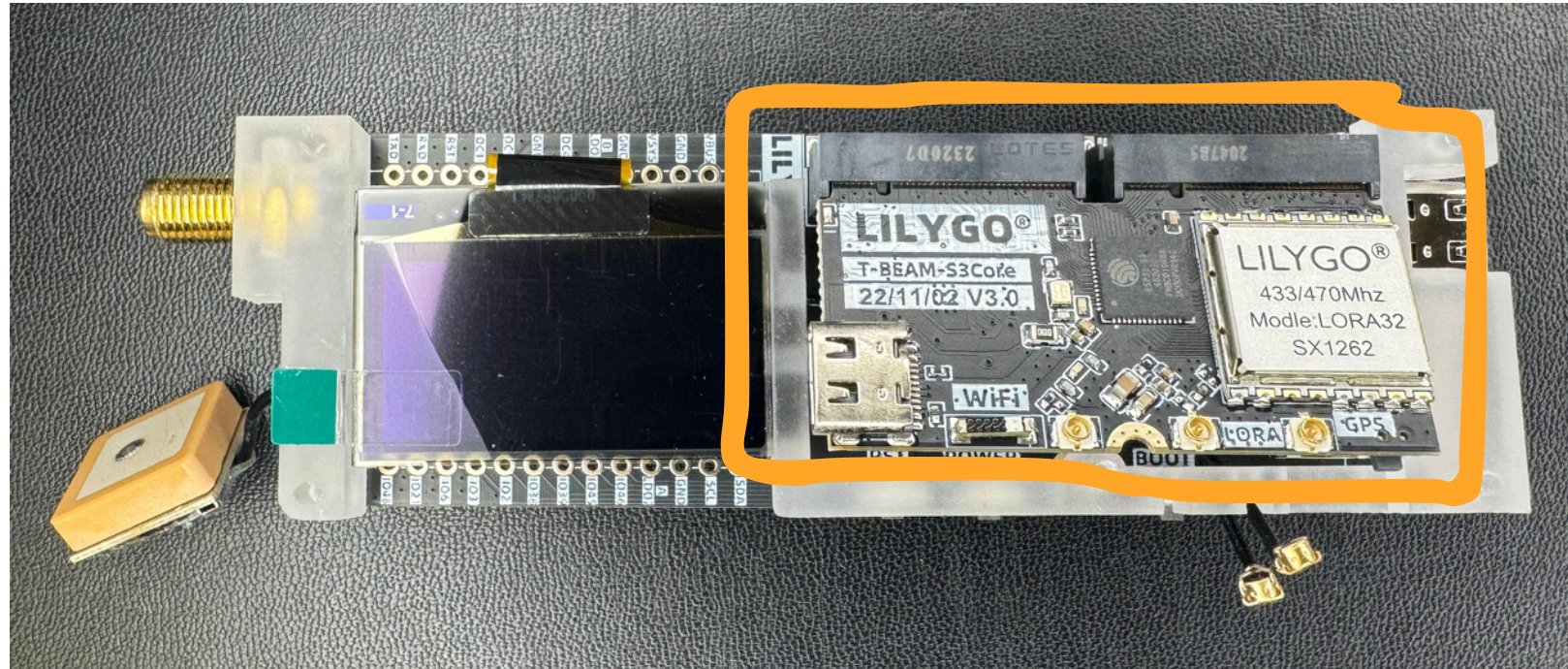


Step 2: Gently un-adhere the GPS antenna from the battery casing

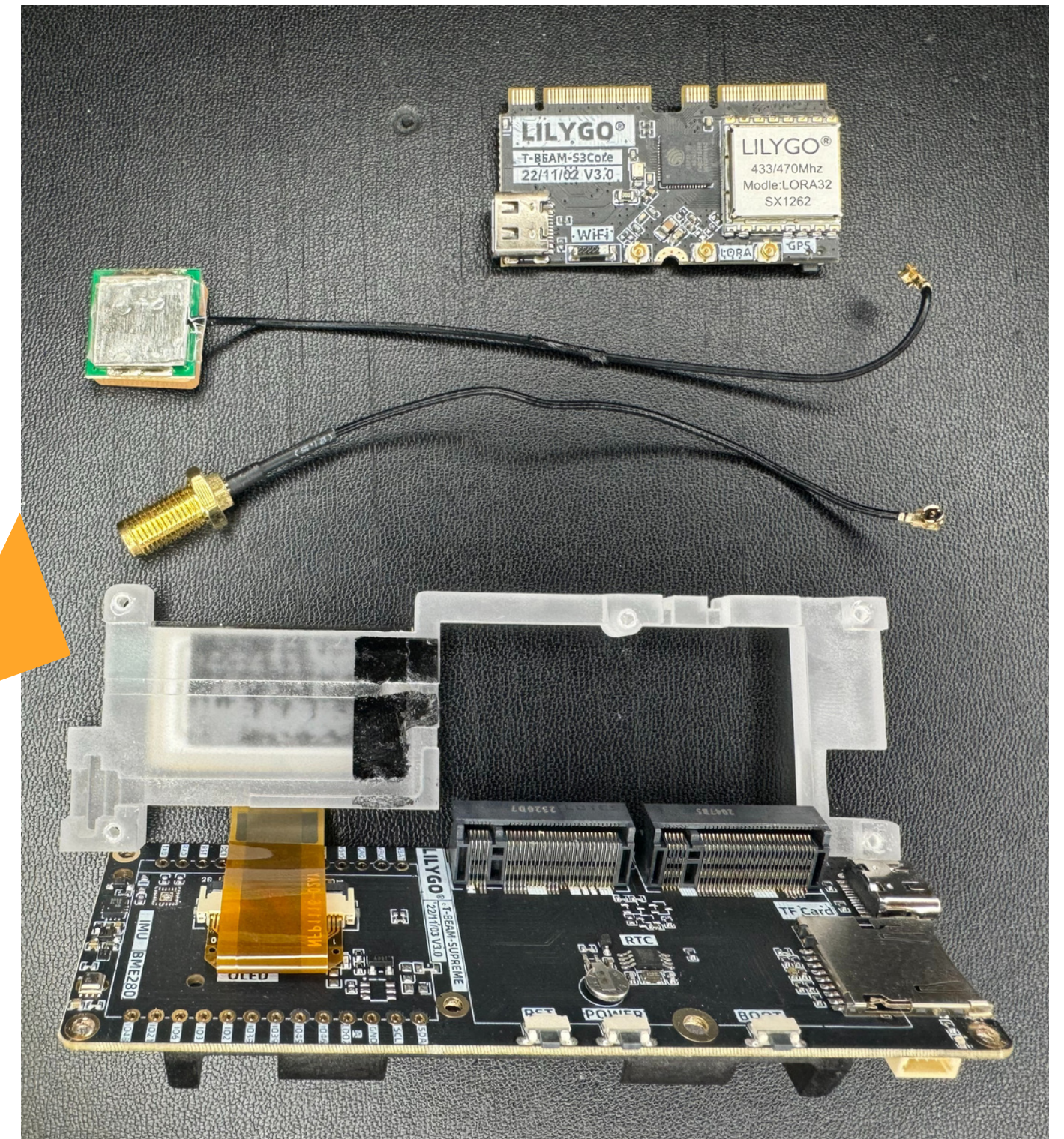
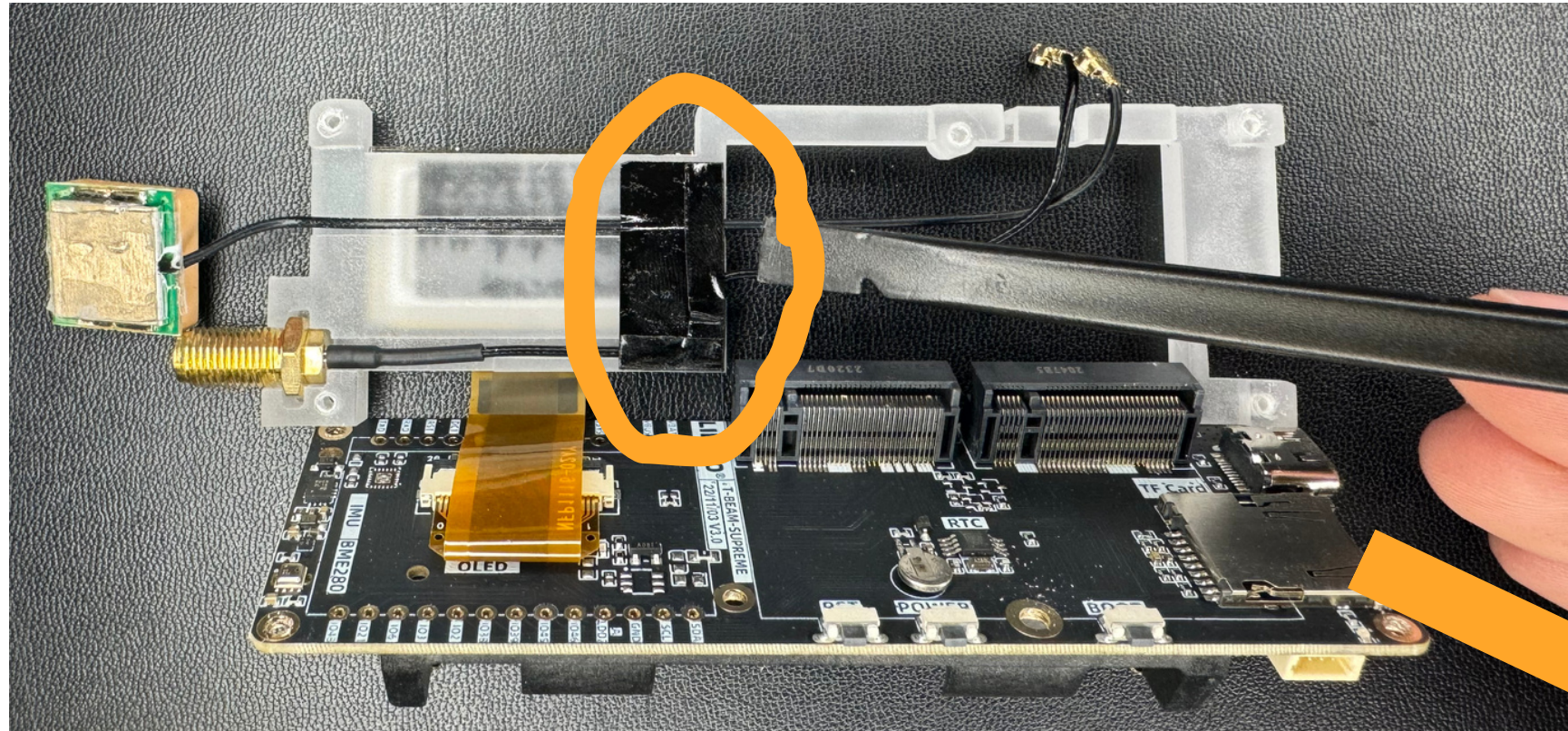


Step 3: Using a Phillips screwdriver remove all 6 Phillips screws

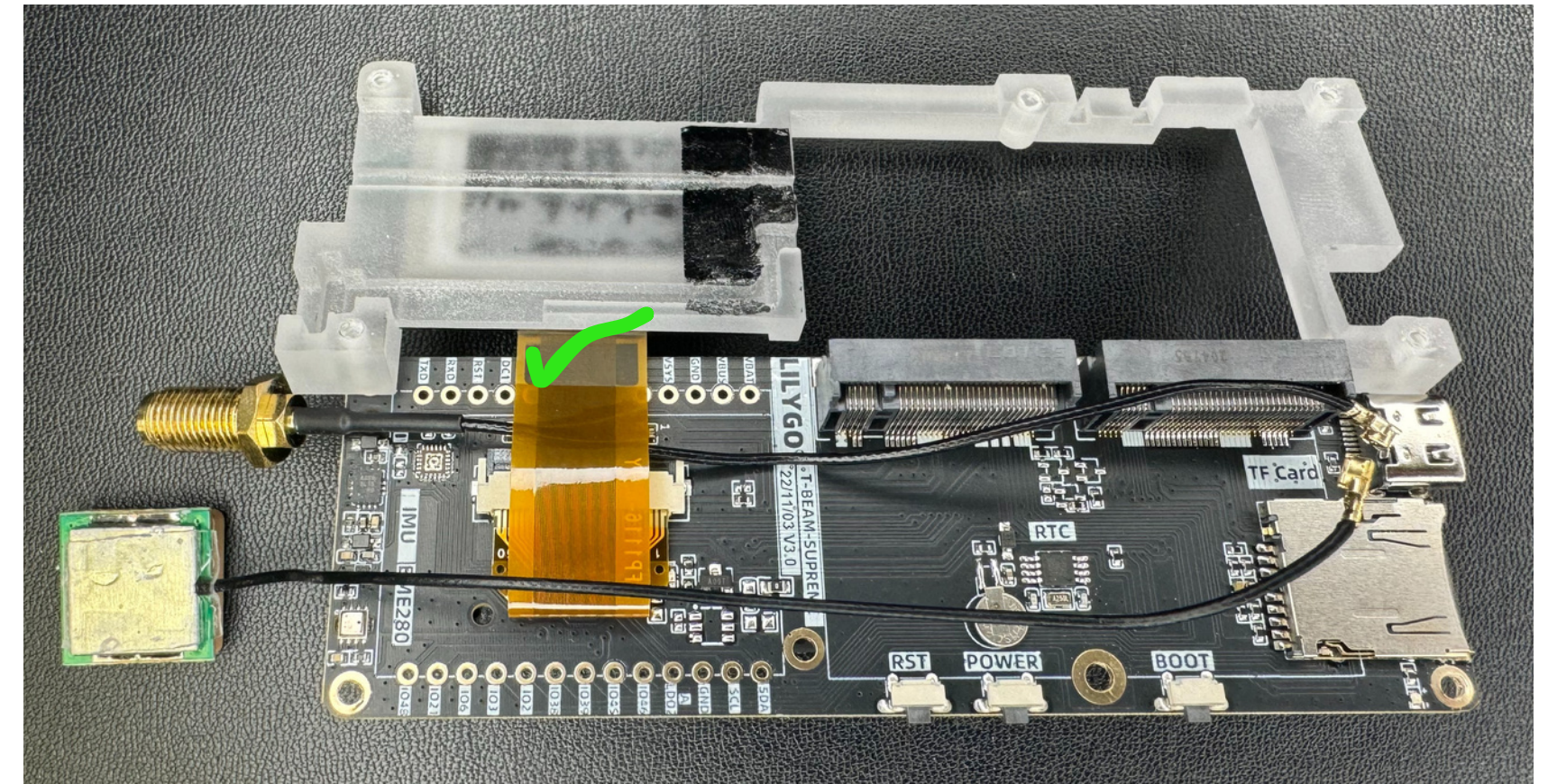
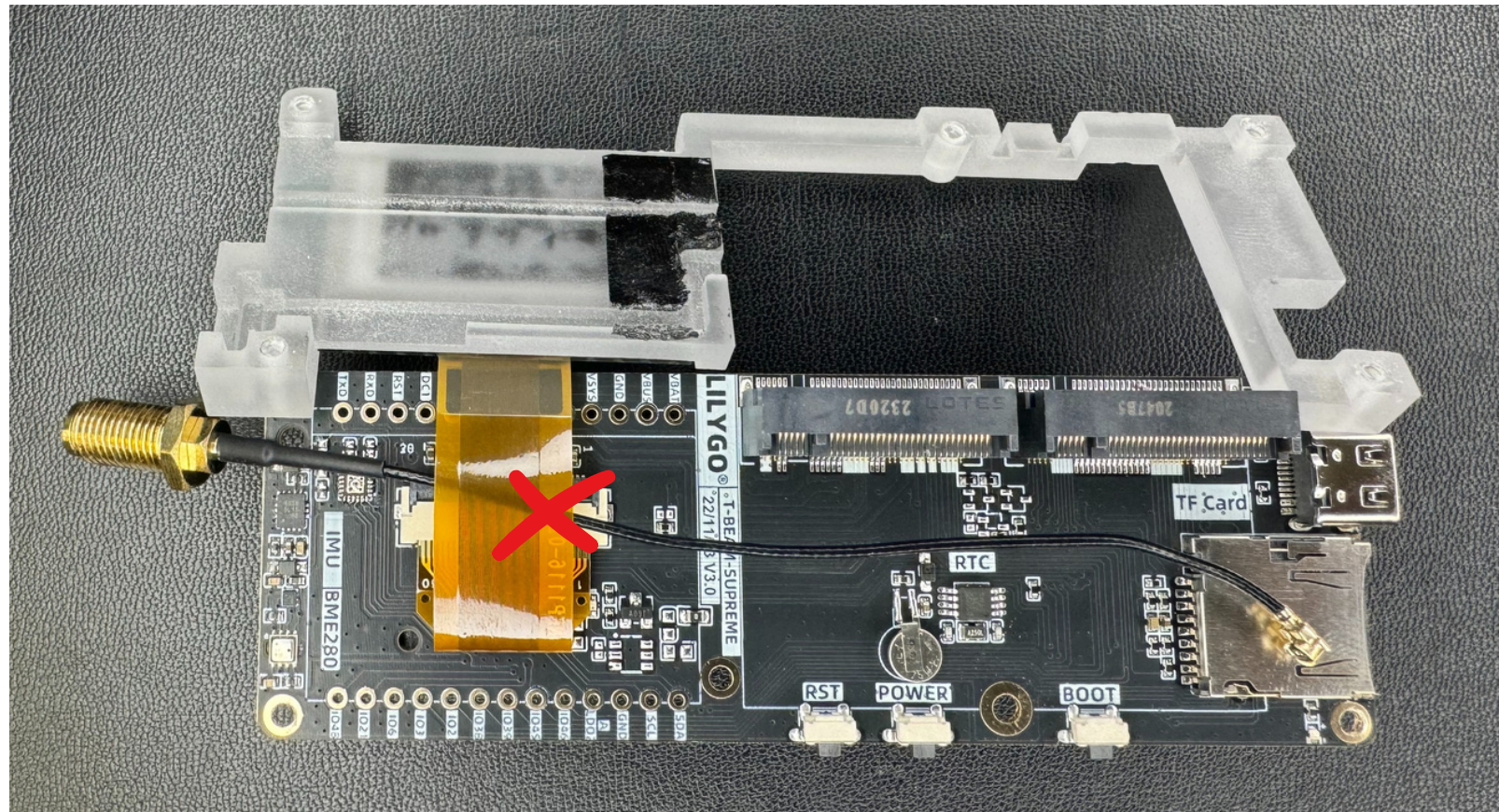




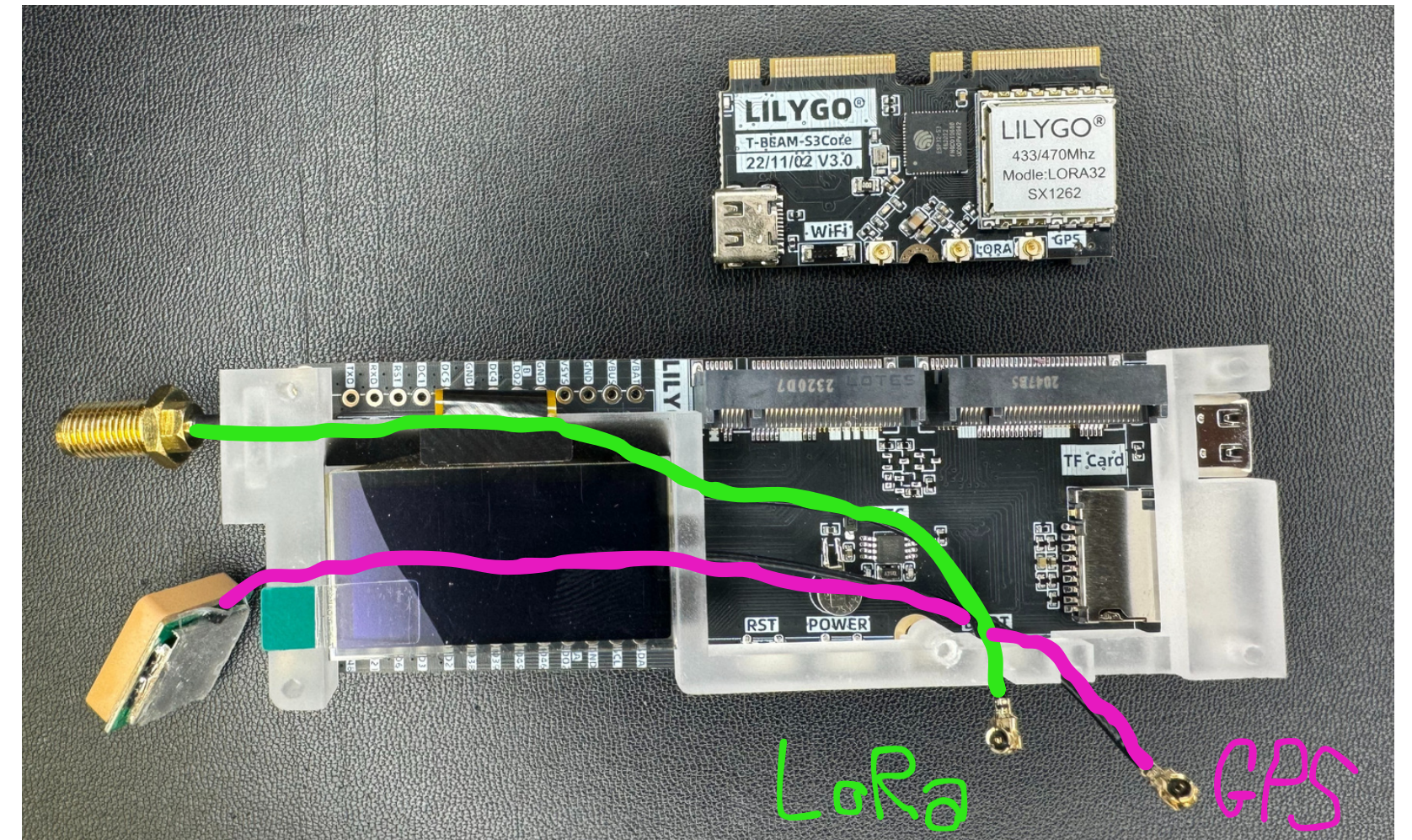
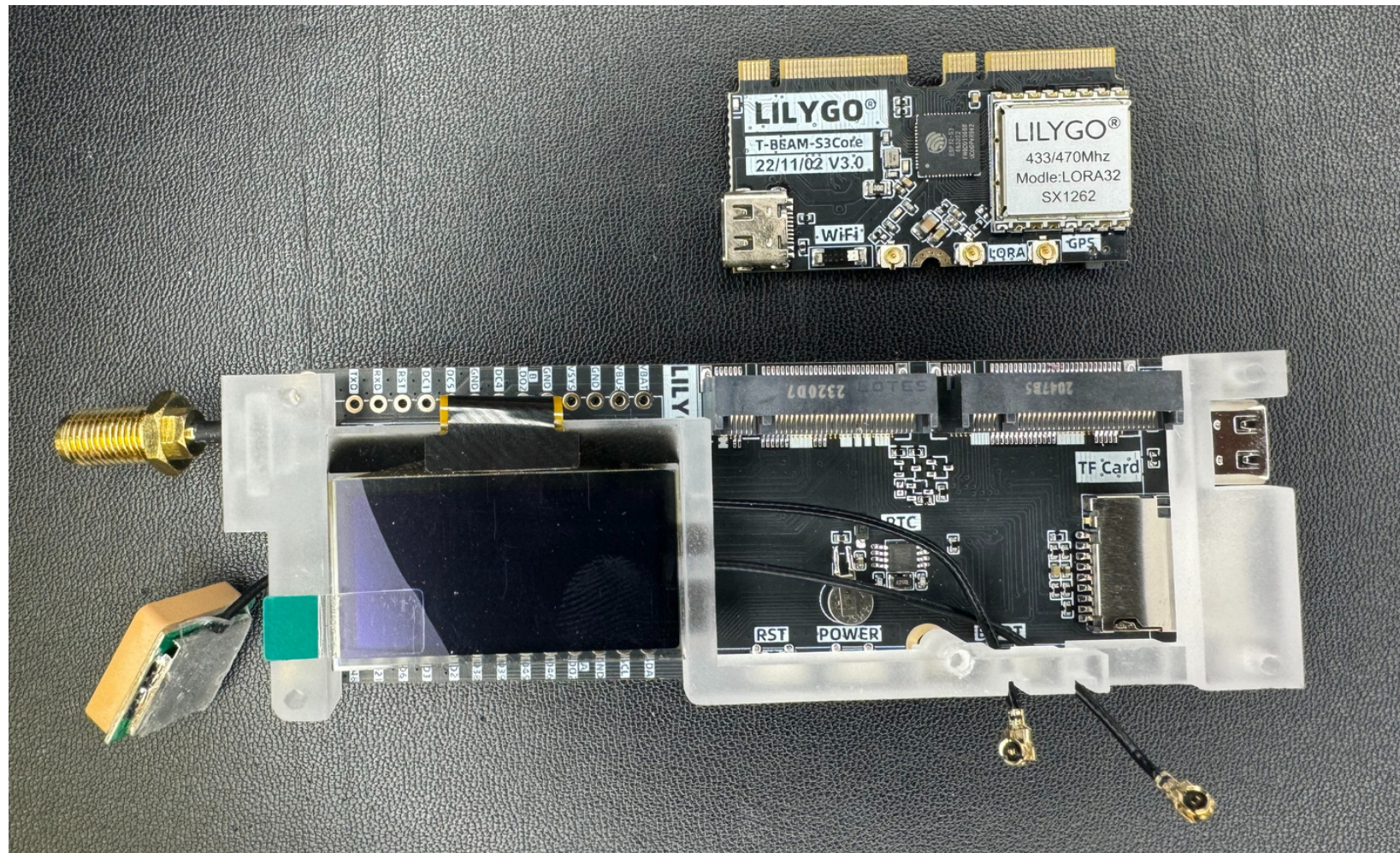
Step 4: Remove the T-Beam
S3 Core



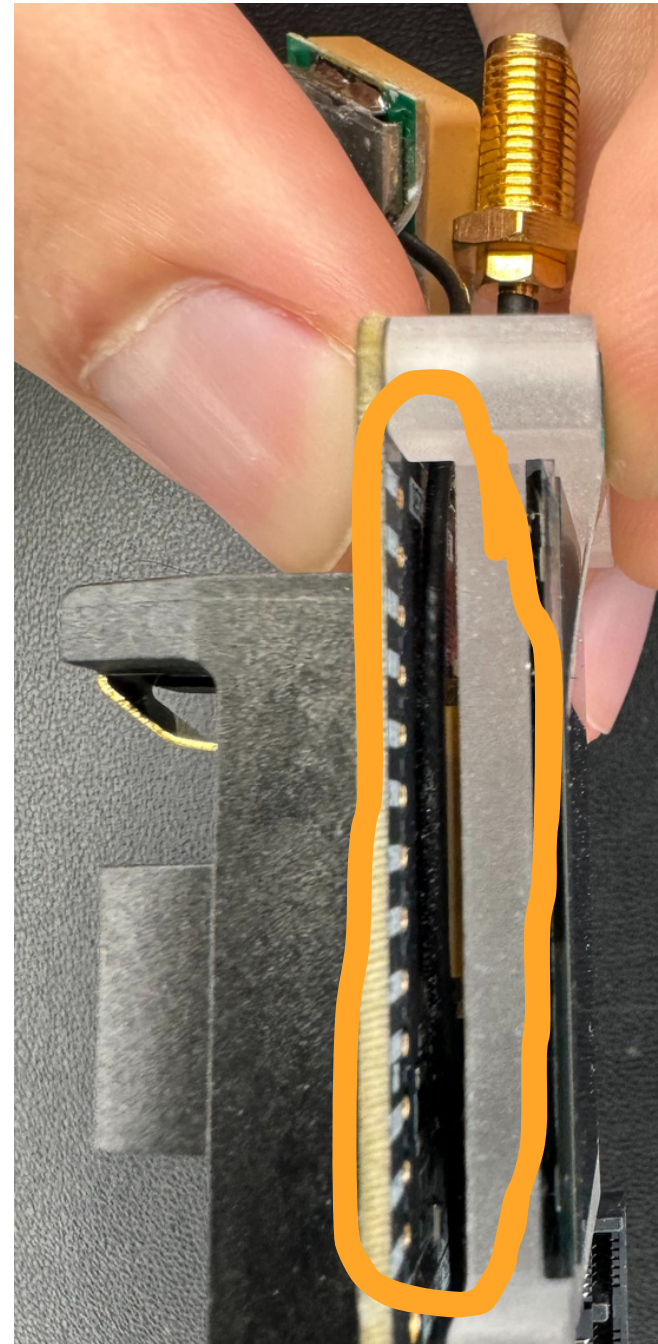
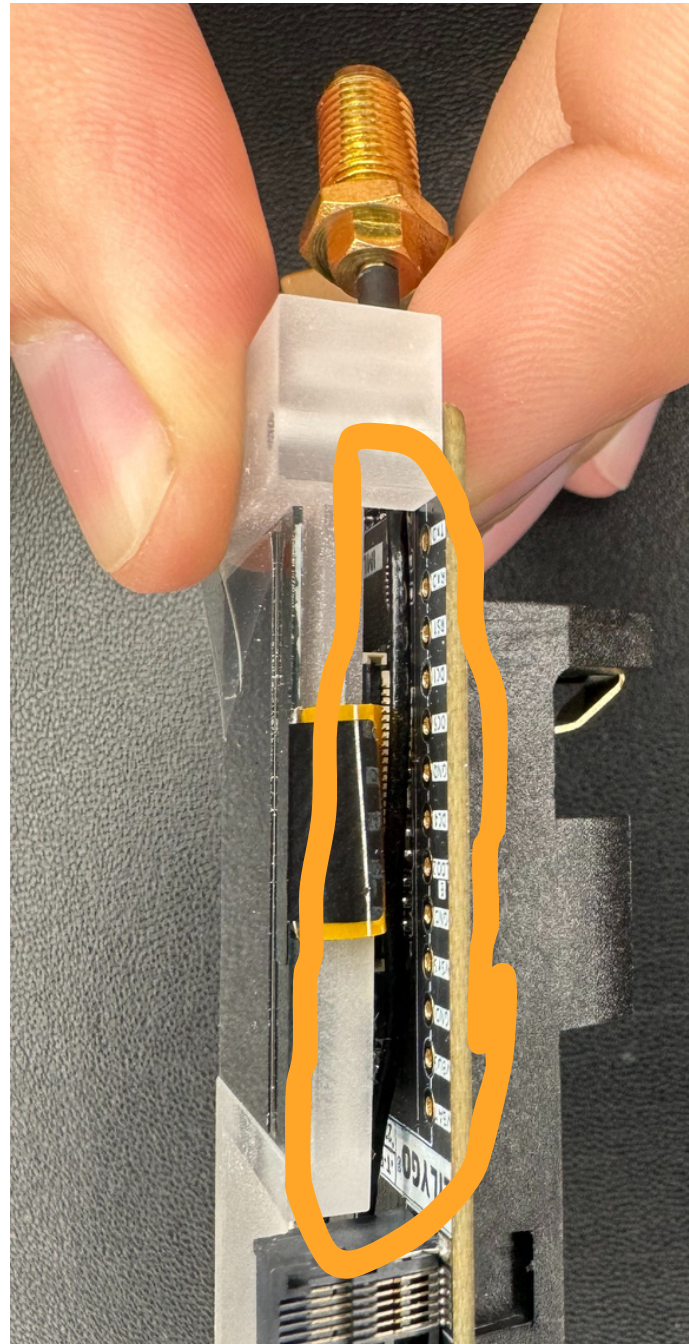
Step 5: Gently fold the screen upward and remove the adhesive holding the GPS antenna and SMA pigtail in place



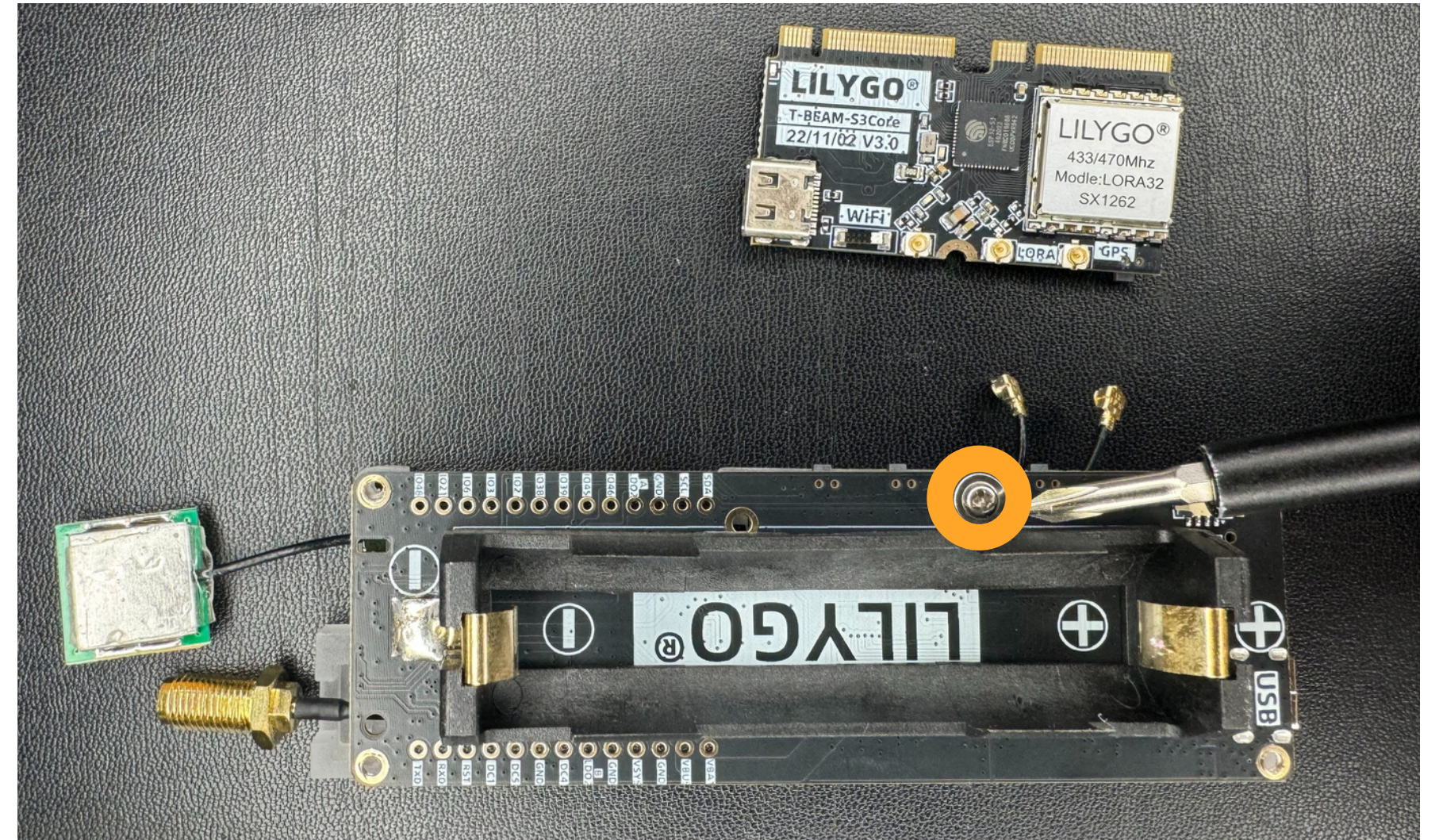
Step 6: Re-route the SMA pigtail behind the screen ribbon, but above the screens connector to the base board. The GPS antenna will follow its original path.



Step 7: Gently fold the screen back into place and route the IPEX connectors into their intended slots. The wires should not be pinched down and should have some wiggle room.



Step 8: Double check for pinch/pressure point on the SMA and GPS wires.



Step 9: Secure the screen to the base board with one of the smaller Phillips screws



Step 10: Re-connect the T-Beam S3 Core back to the base board and secure it using one of the smaller Phillips screws



Step 11: Re-connect the LoRa and GPS IPEX connectors



Step 12: Insert the button extension into their intended slots on the case frame.

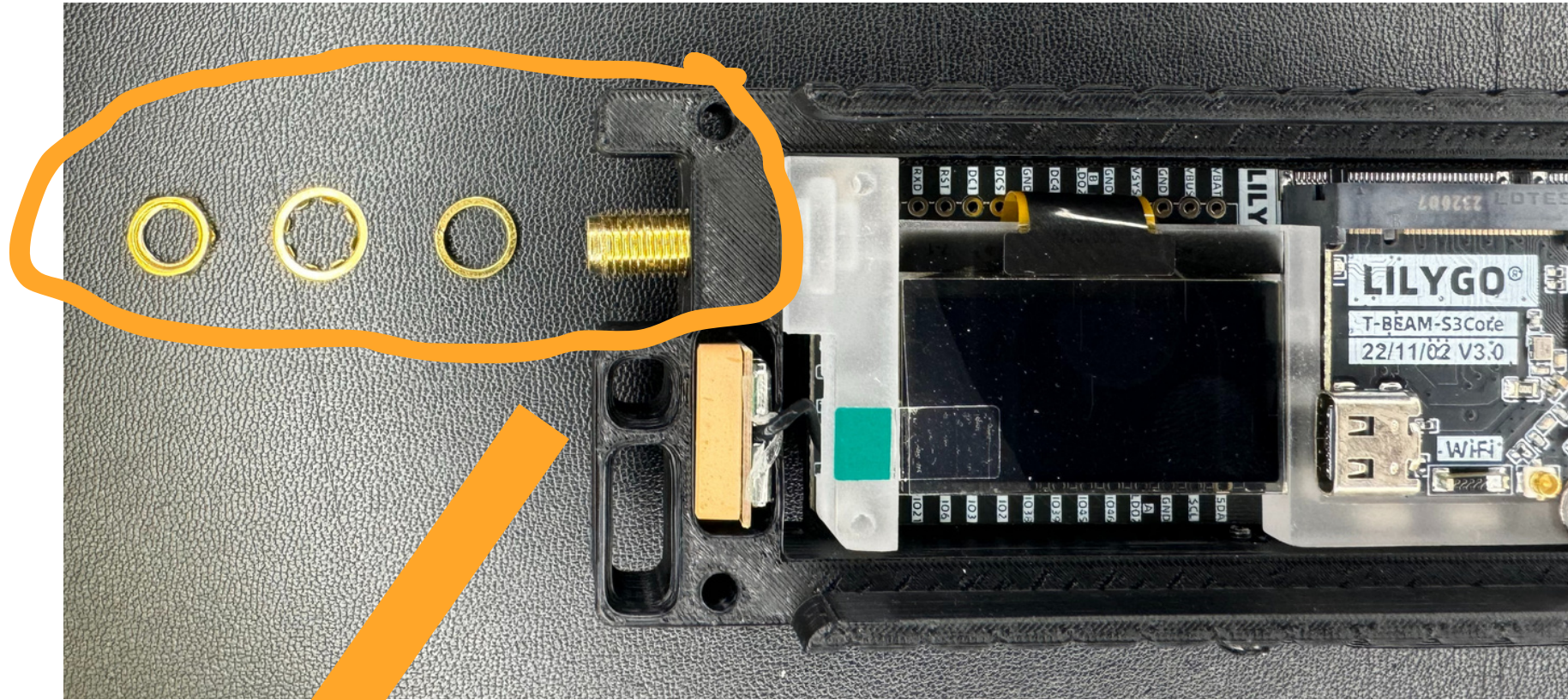


Step 13: Route the SMA connector into case frame and slide the GPS antenna into its slot, then slide the base board into the case frame starting on the side nearest to the SMA connector. Gently push the side with the Type-C port down into place.

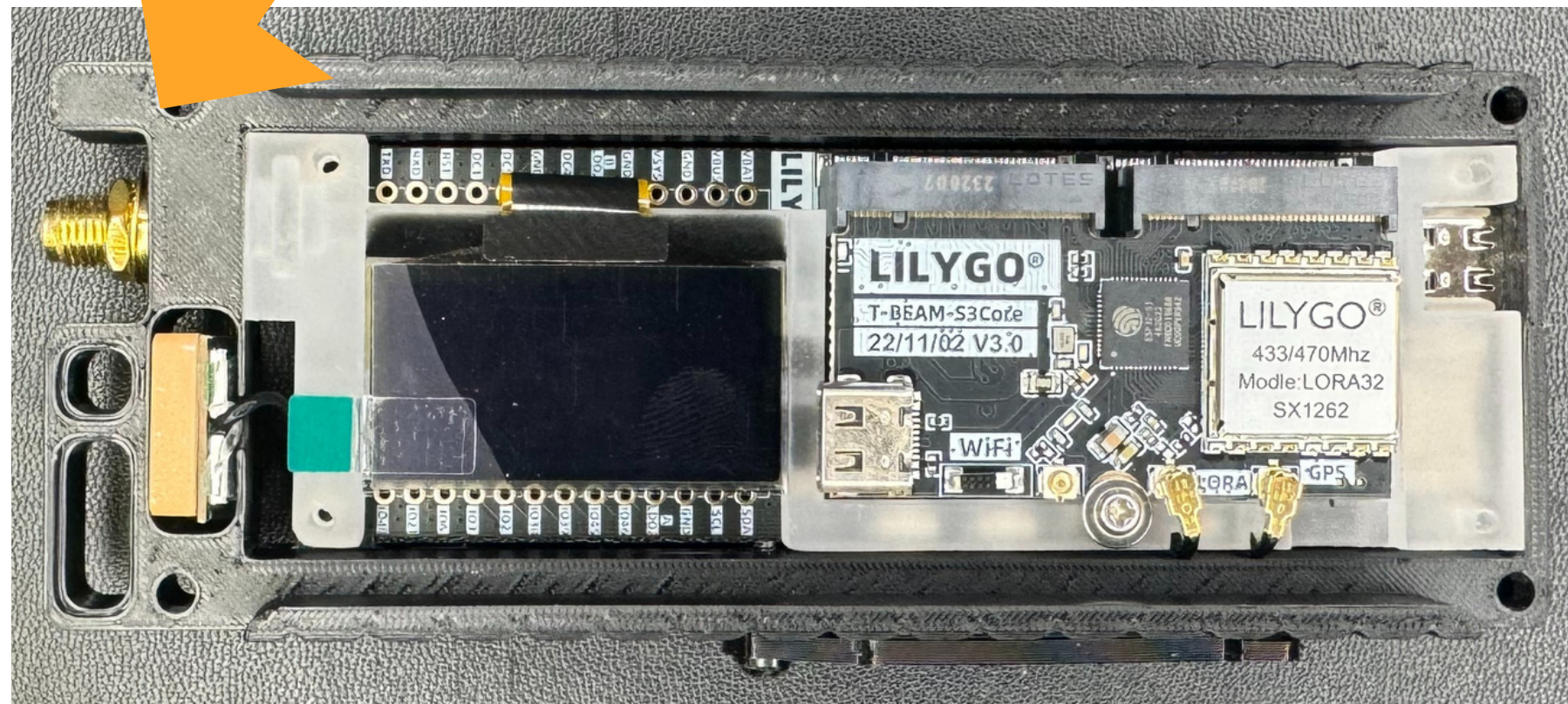


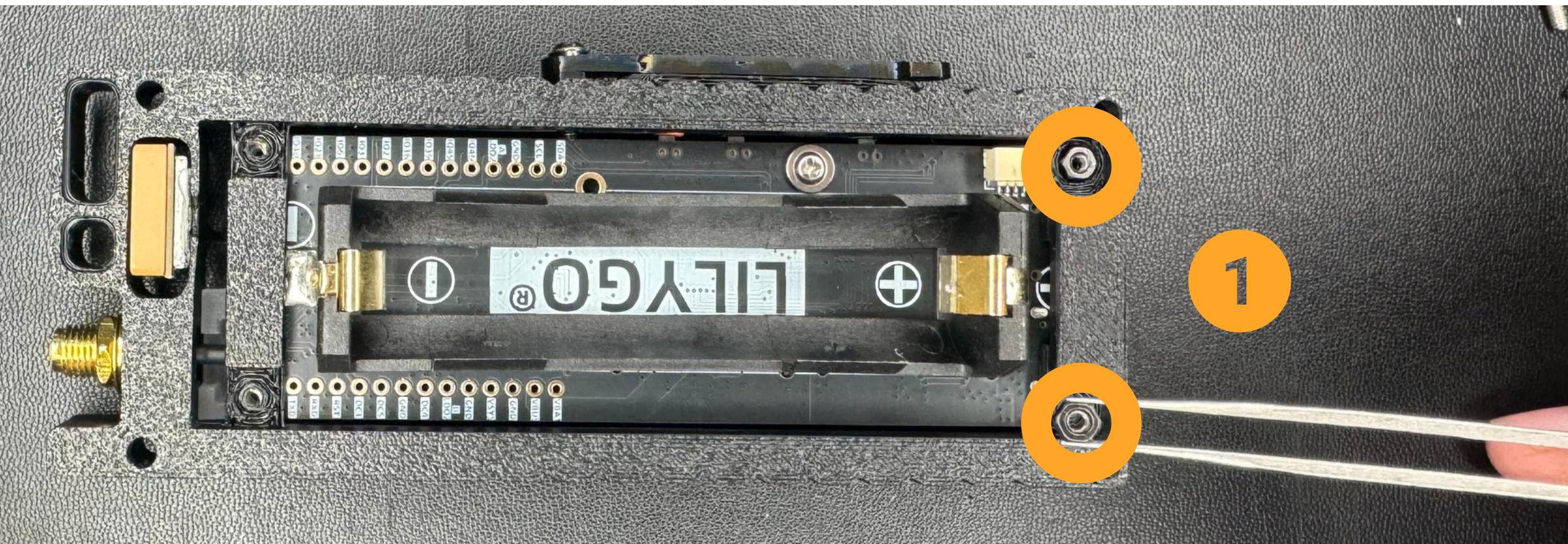
2 Get this side down in place in the case frame first.

3 Then push this side down into place.



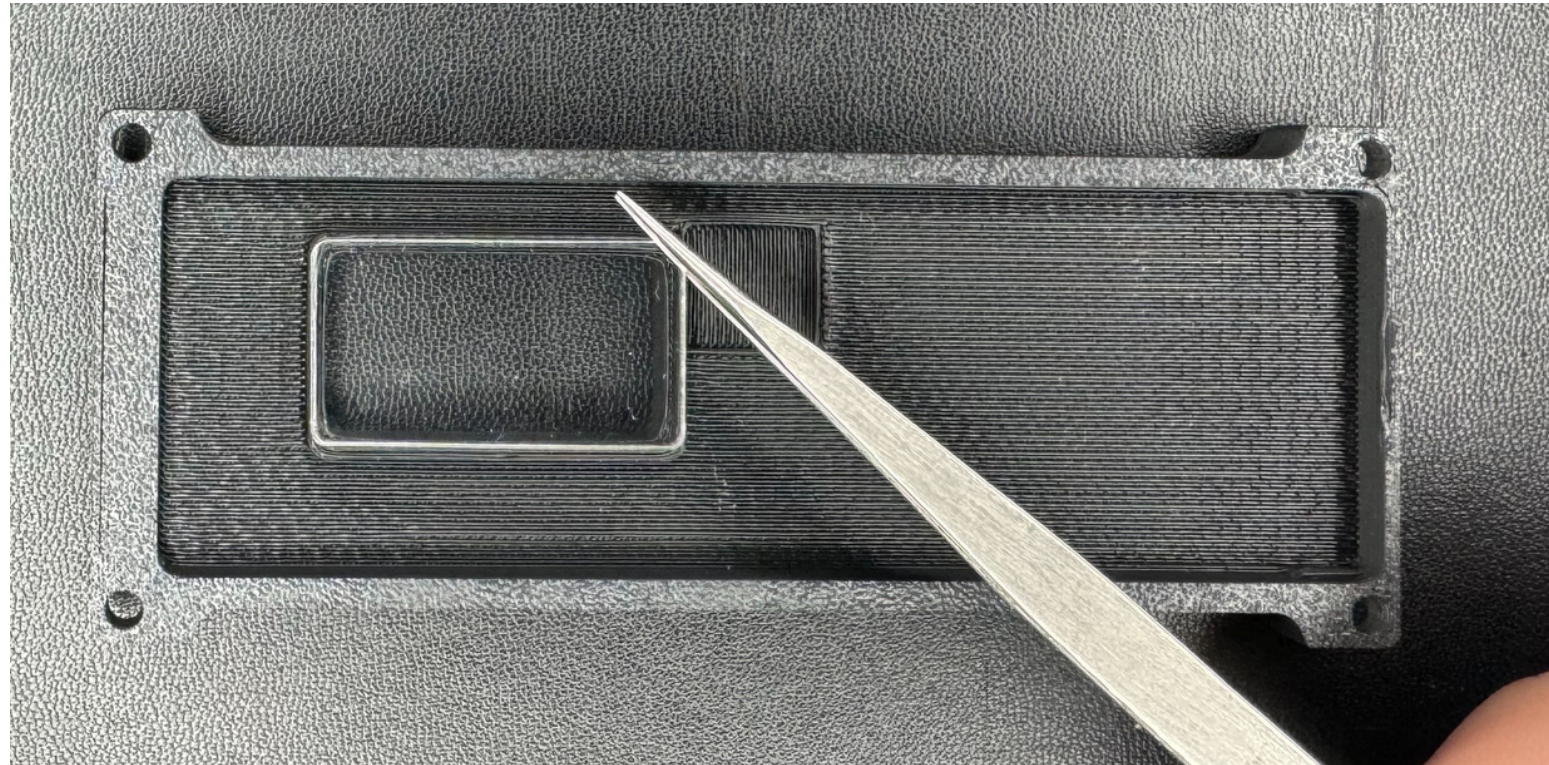
Step 14: Secure the SMA connector pigtail





Step 15: Secure the base board to the frame on the side nearest to the Type-C port with the two M2 nuts and two M2x16mm Phillips screws that are provided with the case





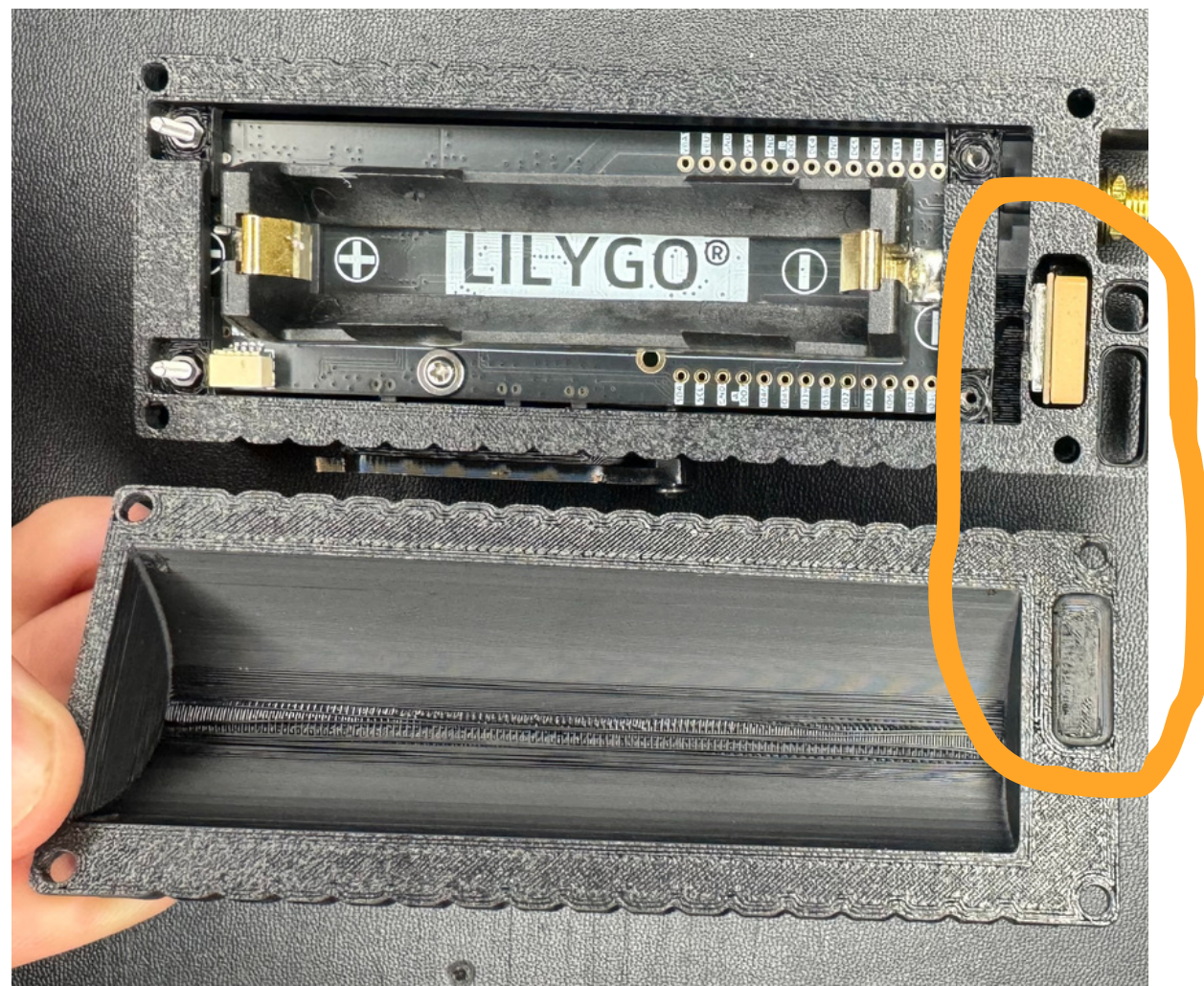
*Caution- if you plan on using adhesives such as super glue as extra support for the acrylic window it can cloud it.

Step 16: Insert the acrylic window into the front cover and push it into place. Then place the front cover on the frame.



Step 17: Attach the SMA antenna and insert the 18650 battery into its slot. Double check the polarity aligns correctly on the battery.





Step 18: Attach the back cover to the frame using the M3 screws and nuts. Make sure the slot for the GPS properly aligns.

